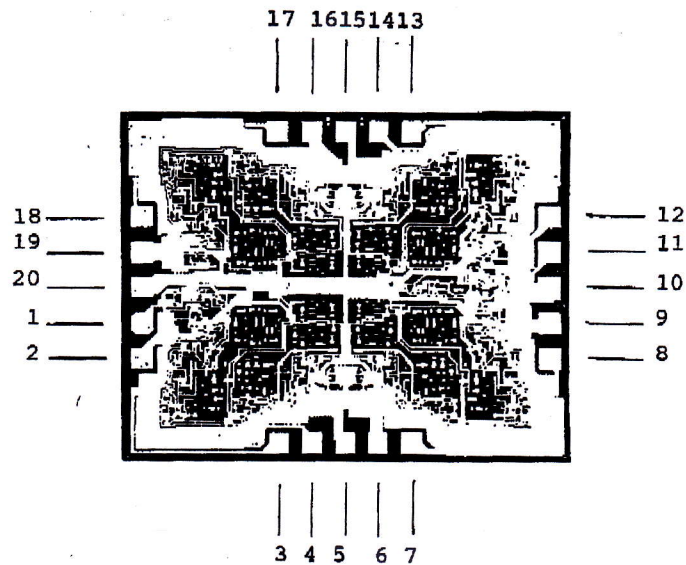




Sierra Components, Inc.

2222 Park Place, 3-E • Minden, Nevada 89423

Phone: 775.783.4940 Fax: 775.783.4947



Topside Metal: (AL)

Backside Metal: (Si)

Backside Potential:

Bond Pad Size:

Mask Ref:

APPROVED BY: DG

DIE SIZE: 96 x 76 Mils

DATE: 3/20/14

MFG: Motorola

THICKNESS:

P/N: 54LS374